

SIGNRACER

PRECISION MEETS PERFORMANCE

2512 High Bridge



Touch Screen Adjustable Height up to 50 cm



Compliant



**Anti-Allergy
Skin Safe**



**Extended
Colour Gamut**

High Bridge features and specifications



PLC controlled: Industrial Programmable Logic Controller

Highest Precision: Fast high speed motor with 1 micron accuracy.

Wireless Tablet Control: High bridge adjustment via 10 inch tablet.

High safety standards: Movements only with permanent contact.

Position Feedback: Continuous monitoring of actual position on tablet.

Flexible positioning: Input of exact position or fixed steps.

Automatic error detection: Built-in calibration and real-time alerts.

Bridge auto-calibration: Levelling with 1 micron accuracy.

Adjustable height for objects up to 50 cm



LOW POSITION



MEDIUM POSITION



HIGH POSITION

In addition to the adjustable high bridge, SIGNRACER's linear motor technology ensures high-speed, ultra-precise carriage motion using direct electromagnetic control, minimizing vibration and maintenance. The 1-micron linear encoder guarantees smooth movement and superior print quality, even at maximum bridge height.

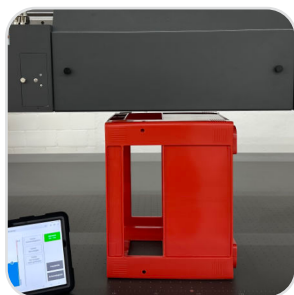
Full Control under your fingertips



Portable WiFi Enabled Touchscreen User Interface on Tablet

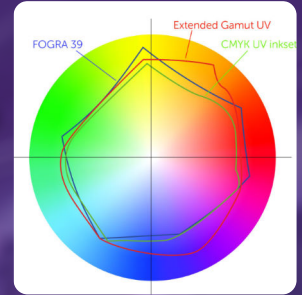
To ensure perfect alignment and precision, the tablet-controlled software enables wireless fine-adjustment of the high bridge positioning, allowing operators to make real-time corrections with micron-level accuracy while being close to printed products on the flatbed. This intuitive user interface enhances workflow efficiency, minimizes errors, and guarantees highest print quality in every height position and on challenging surfaces.

Opening new opportunities with wide range of applications



SR-200+ Industrial Grade Inks

SIGNRACER SR-200+ inks deliver vibrant colors, industrial strength, and extended durability, making them ideal for demanding applications. With enhanced adhesion, plasticizer resistance, and a non-sticky finish, these inks ensure long-lasting, high-quality prints on a variety of materials. GREENGUARD Gold Certified and featuring nickel-free yellow, SR-200+ meets the highest safety and environmental standards while expanding the color gamut with Orange, Violet, and Light Black for superior print precision. Our GREENGUARD Gold-certified SR-IN White ink also functions as a high-adhesion primer.



| Specifications | SIGNRACER 2512 HB |
|---|---|
| Print technology | Multi-drop technology |
| Print Heads | Ricoh Gen. 6 |
| Print head count | 2-8 Print Heads |
| Printbed | 2500 × 1250 mm |
| Flatbed | Honeycomb 4 zones vacuum table with registration pins |
| Carriage Speed | 1.3 m/s (Linear Motor) |
| Nozzle Quantity Drop size | 1280 nozzles 5 - 15 pl grayscale |
| Dimensions (Length × Width × Height) | 4970 mm × 2120 mm × 1550 mm |
| Transport Box Dimensions (Length × Width × Height) | 5250 mm × 2300 mm × 1850 mm |
| Machine / Transport Box / Gross Weight | 1450 kg / 330 kg / 1780 kg |
| Energy Consumption | 6 kW |
| Media / Curing | |
| Max. Media Width / Max. Print Width | 2540 mm / 2500 mm |
| Media Type | Rigid and flexible (PVC Boards, Aludibond, PS, PP, Acrylat, PET-G, Glass) |
| Media Thickness | Up to 500 mm with high precision dual motor high bridge |
| Media Curing System | Air Cooled High Performance LED UV curing with variable power levels |
| Single Row | 90 mm / 14 Watt/cm ² |
| Double Row | 180 mm / 14 Watt/cm ² |
| Triple Row | 210 mm / 16 Watt/cm ² |
| Printing Speeds | |
| Ricoh Gen. 6 | Single Row / Double Row / Triple Row |
| Draft (4 pass, 605x900 dpi) | 28 m ² /h / 49 m ² /h / 63 m ² /h |
| Production (6 pass, 605x900 dpi) | 24 m ² /h / 42 m ² /h / 56 m ² /h |
| Quality (9 pass, 605x900 dpi) | 16 m ² /h / 30 m ² /h / 40 m ² /h |
| Ink Specifications | |
| Certified Ink Series | SR-100 HD, SR-200+, PremiumFlex+, SR-IN (White) |
| Standard Colour Configurations | CMYK + LC + LM + White + Varnish / CMYK + LC + LM + LK + White |
| Wide Gamut Colour Configuration | CMYK + Orange + Violet + White |
| Ink Consumption | 8 ml/m ² |