

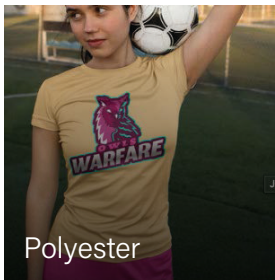
XPD-724

24" DIRECT-TO-FILM PRINTER

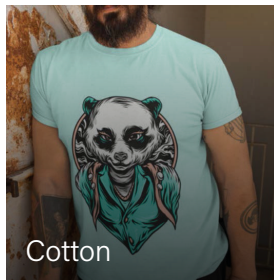


- FLEXI DTF EDITION RIP SOFTWARE
- XPD INKS
- 500ML CARTRIDGES DEGASSED FOR BETTER PERFORMANCE
- AUTO-SLEEP MODE

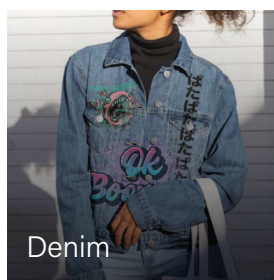
At just 24 inches wide, the STS XPD 724 24" DTF 24 inch printer fits into any size print shop. And because it's powered by STS XPD Inks with Advanced Degassing Technology Solutions, you can easily and quickly create custom t-shirts and apparel. This compact printer is made in Japan and fits onto a table or portable stand. With a low price point, perfect size and built-in circulation system, the STS XPD-724 DTF 24 inch printer is the best option for anyone entering the custom apparel marketplace, and even contains its own internal circulation system.



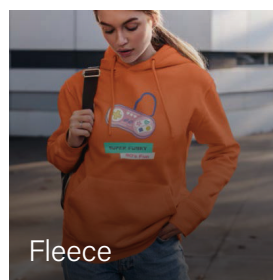
Polyester



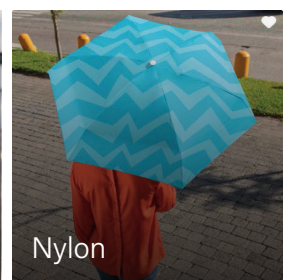
Cotton



Denim



Fleece



Nylon

It has SAI's Flexi DTF Edition RIP Software, bundled with Flexi DTF Editor. The XPD-724 is paired with STS's XPD inks, which offers users excellent color gamut and outstanding durability.



Nozzle
Area
Select

OEKO-TEX®
INSPIRING CONFIDENCE
ECO PASSPORT

POWERED BY STS Inks®

US OFFICE

STS Inks®
8300 Congress Ave.
Boca Raton, FL 33487
Tel: 561-999-8818
Mail: sales@stsinks.com

EU OFFICE

STS Inks® LTD
Ana Ahmatova 9, 1729
Sofia, Bulgaria
Tel: +359-2903-9999
Mail: cseu@stsinks.com

SOUTH AMERICA OFFICE

STS Inks®
Calle 38 Sur No. 33-13.
Envigado, 055422
Tel: +57-4-448-88-39
Mail: Norman@stsinks.com

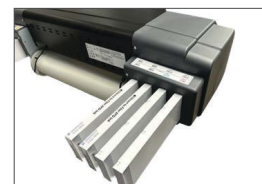
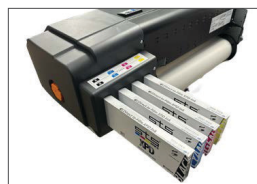
STS
DIRECT TO FILM

WWW.STSINKS.COM



FEATURES

- Built-in color sensor for auto bidirectional alignments.
- Improved feed mechanism corresponding to a wide range of media.
- MUTOH Status Monitor (MSM) checks printer status in real time and print history.
- Media flange allows for easy loading.
- White ink circulation.
- Nozzle area selection.
- Drop Master 2 Technology.



SPECIFICATIONS

Printing systems	Drop-on-demand Micro Piezo Inkjet Technology	Interface	Gigabit-Ethernet (1000BASE-T)	
Print head height	Three level adjustment: Low 1.5mm, Mid. 2.5mm	Power Requirements	AC 100-220V± 10%, 50/60Hz ± 1Hz	
Print head	1	Printing Environment	Operating temperature: 68°F – 75°F / 20°C - 24°C Operating humidity range: 35% - 45%	
Max print resolution	1440x1440dpi	Power Consumption	Main: Operation status 77W or less Standby: 52W or less	
Print modes	1440/1080/720/540/360dpi 12+modes	Dimensions (WxDxH)	Printer including stand: 47"x23"x46" cover closed	
Media width	24" / 60cm	Weight	Body: 70lbs Stand: 19lbs	
Media capacity	ø 5.9" dia / 2" & 3" cores /Roll media 66lbs or less	INK	Type	DTF Water Based
Max media thickness	Low 0.3mm, High 1.3mm		Ink Set	CMYK WW CL CL
Max printable width	24 in		Volume	500mL XPD Ink Cartridges CMYK White
Height adjustment	Manual		No. of slots	8
RIP software	Flexi DTF Edition			

US OFFICE

STS Inks®
8300 Congress Ave.
Boca Raton, FL 33487
Tel: 561-999-8818
Mail: sales@stsinks.com

EU OFFICE

STS Inks® LTD
Ana Ahmatova 9, 1729
Sofia, Bulgaria
Tel: +359-2903-9999
Mail: cseu@stsinks.com

SOUTH AMERICA OFFICE

STS Inks®
Calle 38 Sur No. 33-13.
Envigado, 055422
Tel: +57-4-448-88-39
Mail: Norman@stsinks.com



WWW.STSINKS.COM